

Logo Design Ideas for Root to Rise Incubation Centre

Based on my research into Surana College's "Root to Rise" incubation centre, I've developed comprehensive logo concepts that capture both the philosophical depth of the name and the professional requirements of a modern business incubation facility^{[1] [2] [3]}. The "Root to Rise" concept, deeply rooted in yoga philosophy, represents the fundamental principle that strong foundations enable significant growth—perfect symbolism for startup incubation^{[4] [5] [6]}.

Understanding the "Root to Rise" Philosophy

The concept of "Root to Rise" originates from yoga practice, where it signifies the need to establish a solid foundation before reaching upward^{[4] [7]}. This philosophy translates beautifully to business incubation: startups must develop strong fundamentals (the "roots") before they can scale and succeed (the "rise")^{[5] [8]}. For Surana College's incubation centre, this represents the journey from innovative ideas to thriving businesses, emphasizing both grounding in practical skills and aspiration toward entrepreneurial success^{[1] [9]}.

Key Design Principles for Incubation Centre Logos

Modern incubation centre logos typically incorporate several essential elements that communicate innovation, growth, and professional credibility^{[10] [11] [12]}. **Color psychology** plays a crucial role—blues convey trustworthiness and professionalism, greens represent growth and sustainability, while oranges and purples suggest creativity and innovation^{[10] [13]}. **Geometric shapes** often work better than complex imagery, as they scale well across digital platforms and maintain clarity at small sizes^{[12] [14]}. The most successful incubation logos balance **organic growth symbols** with **technological elements** to represent both natural development and cutting-edge innovation^[15].

Logo Concept Categories

1. Organic Tree-Based Designs

The most literal interpretation of "Root to Rise" involves tree imagery, showing visible roots extending downward while branches reach skyward. This concept emphasizes the natural growth process and the interconnected ecosystem of entrepreneurship.



ROOT TO RISE

INCUBATION CENTRE

Modern tree-based logo concept for Root to Rise incubation centre with clean typography

2. Abstract Geometric Interpretations

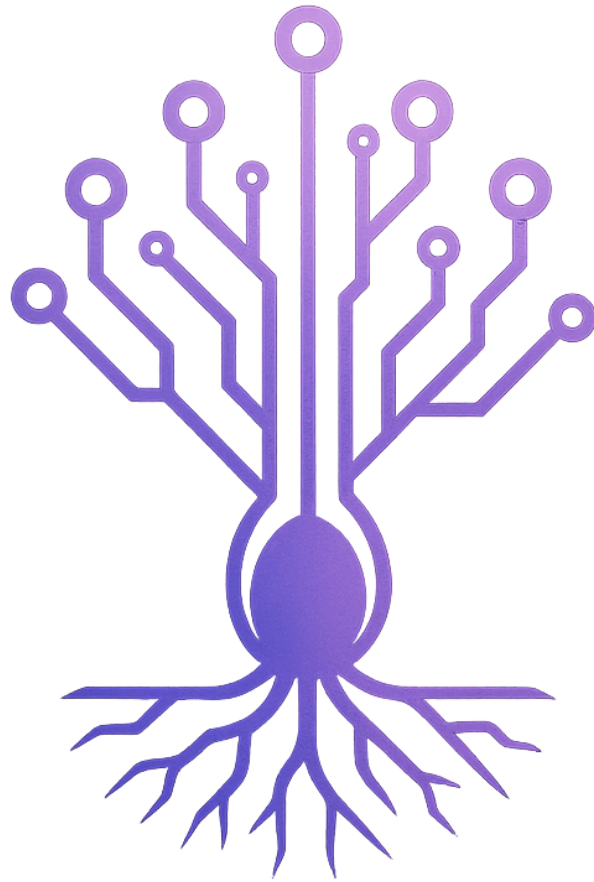
Modern startup environments often prefer abstract representationsward arrows, interconnected nodes, or geometric patterns that suggest both foundation and ascension.



Abstract geometric logo showing growth and foundation for Root to Rise incubation centre

3. Tech-Organic Hybrid Concepts

Given the innovation focus of most incubation centres, designs that merge organic growth with technological elements effectively communicate both natural development and cutting-edge advancement.



ROOT TO RISE

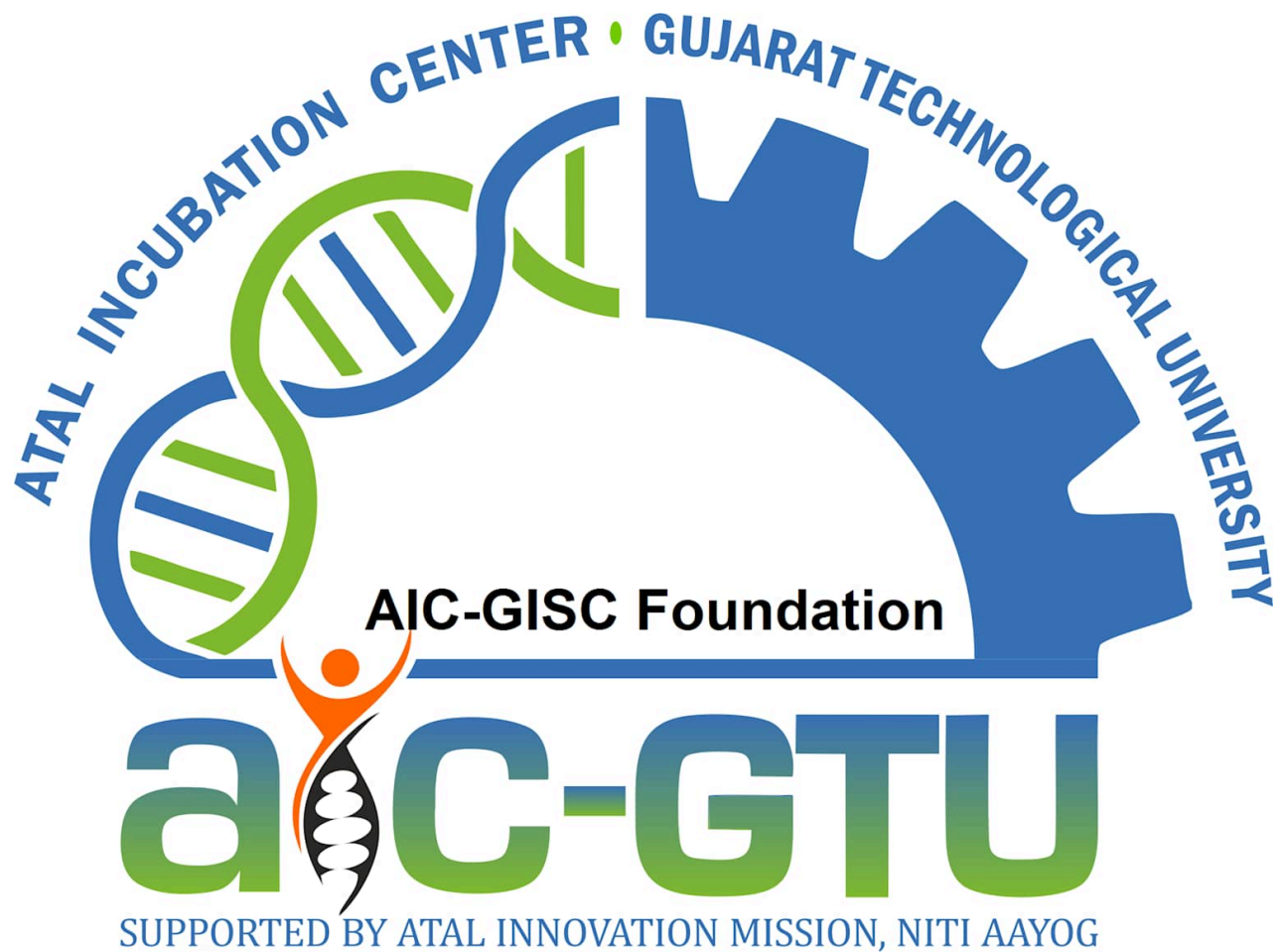
Tech-focused logo merging organic growth with digital innovation for Root to Rise centre

Professional Examples from the Industry

Existing incubation centres demonstrate various successful approaches to logo design. The hub-style connectivity logos emphasize networking and collaboration, while DNA-gear combinations suggest the intersection of natural growth and mechanical innovation.



Minimalistic logo design for an innovation hub with connected nodes representing networking and collaboration.



Logo of Atal Incubation Center, Gujarat Technological University, combining DNA and gear elements representing innovation and technology.

Specific Logo Recommendations for Root to Rise

Primary Concept: Foundation-Growth Symbol

A clean, modern interpretation featuring a stylized foundation block or root system with upward-growing elements emerging from it. The typography should be contemporary sans-serif, with "ROOT" in a grounding color (deep blue or forest green) and "RISE" in an ascending color (lighter blue or vibrant green). The tagline "Surana College Incubation Centre" appears in smaller, professional typography beneath.

Secondary Concept: Circular Ecosystem

A circular badge design representing the complete entrepreneurial ecosystem, with root-like network patterns in the lower half transitioning to branching growth patterns in the upper half. This design works well for social media avatars and maintains recognition across various applications.

Typography-Focused Alternative

For maximum versatility, a primarily typographic logo where the letters themselves suggest the root-to-rise concept—perhaps with "ROOT" using heavier, grounded letterforms and "RISE" using lighter, ascending characters with subtle upward movement in the design.

Color Palette Recommendations

Primary Palette: Deep forest green (#2C5F2D) for roots/foundation elements, transitioning to emerald green (#4CAF50) for growth elements, with professional navy blue (#1A365D) for typography and supporting elements^{[10] [13]}.

Alternative Palette: Modern gradient from deep purple (#6B46C1) through blue (#3182CE) to teal (#319795), suggesting innovation and technological advancement while maintaining professional credibility.

Implementation Guidelines

The logo should work effectively across digital platforms, business cards, letterheads, and large-format displays^{[12] [16]}. **Scalability** is crucial—the design must remain clear and recognizable when reduced to favicon size for websites or social media profiles. **Versatility** requires creating versions for light backgrounds, dark backgrounds, and single-color applications.

The Root to Rise concept perfectly encapsulates the mission of Surana College's incubation centre: providing entrepreneurs with the solid foundation they need to grow their innovative ideas into successful, scalable businesses^{[1] [9]}. The logo should reflect this journey from grounded beginnings to elevated achievements, creating a visual identity that inspires both confidence and aspiration in the startup community^{[11] [17]}.



1. <https://www.suranacollege.edu.in>
2. <https://suranacollegepeenya.edu.in/bcom-colleges-bangalore/innovation-and-incubation-committee>
3. [https://www.suranacollege.edu.in/images/NAAC/AQAR-MAY-2021-22/3.3.1 Entrepreneurship and Innovation Centre \(EIC\).pdf](https://www.suranacollege.edu.in/images/NAAC/AQAR-MAY-2021-22/3.3.1 Entrepreneurship and Innovation Centre (EIC).pdf)
4. <https://www.yogajournal.com/practice/beginners/how-to/alignment-cues-decoded-root-rise/>
5. <https://liforme.com/blogs/blog/what-root-to-rise-means-on-and-off-the-mat>
6. <https://www.rootriseretreats.com/blog/blog-post-title-root-to-rise>
7. <https://choralnet.org/archives/668429>
8. <https://www.linkedin.com/pulse/root-down-rise-up-why-its-more-than-yoga-mantra-barone-cmcp-mba>
9. <https://suranacollegepeenya.edu.in>
10. <https://www.brandcrowd.com/maker/tag/incubator>
11. <https://thebrandincubator.in>
12. <https://www.designcrowd.com/logo-design-gallery/company/startup/incubator-logos>
13. <https://99designs.com/inspiration/logos/innovative>

14. <https://99designs.com/inspiration/logos/incubator>
15. [https://www.behance.net/search/projects/incubator brand identity](https://www.behance.net/search/projects/incubator%20brand%20identity)
16. <https://www.bundl.com/articles/how-to-market-your-corporate-incubator-to-attract-top-startups>
17. <https://thegoodalliance.org/brand-incubator/>